

The Open Data Workflow: Towards an Open Data Middleware

Stefan Scheglmann

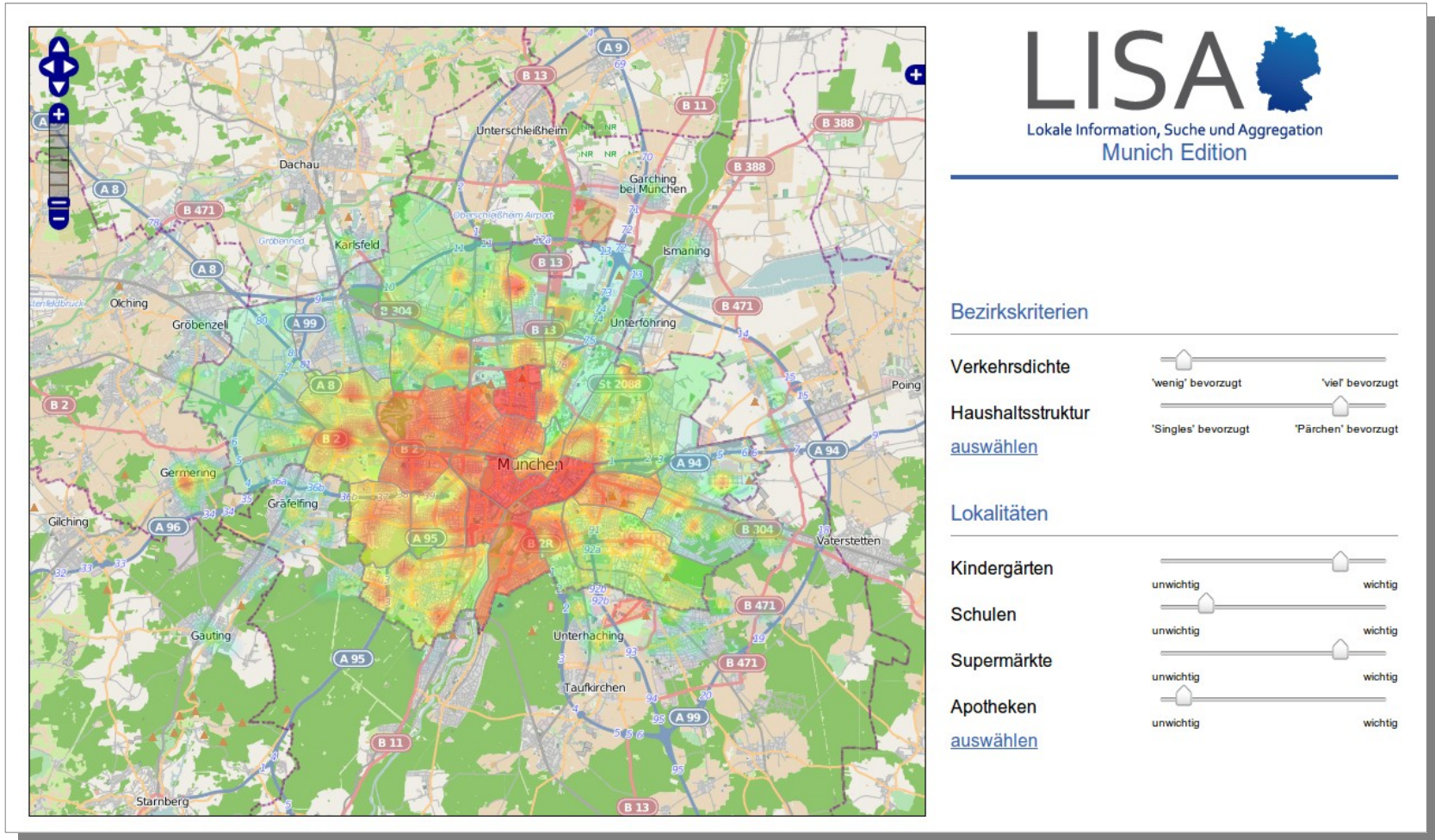


Institute for Web Science and Technologies
University of Koblenz-Landau



Leibniz Institute for the Social Sciences,
Cologne





LISA
Lokale Information, Suche und Aggregation
Munich Edition

Bezirkskriterien

Verkehrsdichte 'wenig' bevorzugt 'viel' bevorzugt

Haushaltsstruktur 'Singles' bevorzugt 'Pärchen' bevorzugt

[auswählen](#)

Lokalitäten

Kindergärten unwichtig wichtig

Schulen unwichtig wichtig

Supermärkte unwichtig wichtig

Apotheken unwichtig wichtig

[auswählen](#)

<http://lisa.west.uni-koblenz.de>

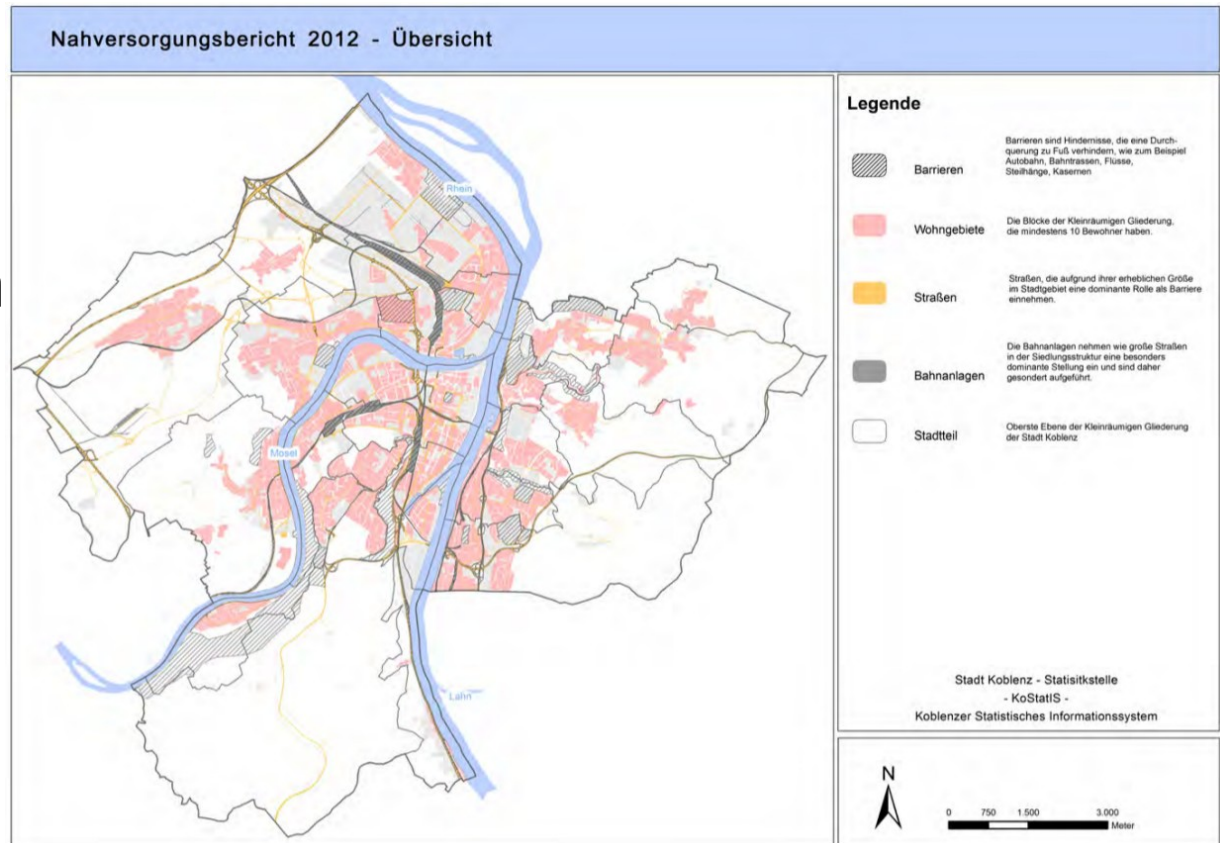
- Location based attractivity Score
- Local and OpenData
- Individual Priorization
- Easy-to-understand Representation
- Javascript, HTML5, OpenStreetMap, OpenLayers

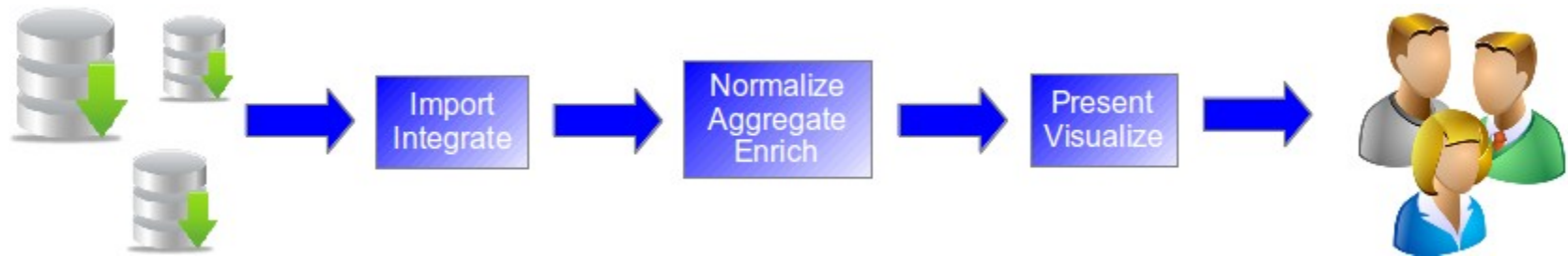


- 1st Price Apps4Deutschland
National OpenData Challenge
- Vodafone Public Brain Award

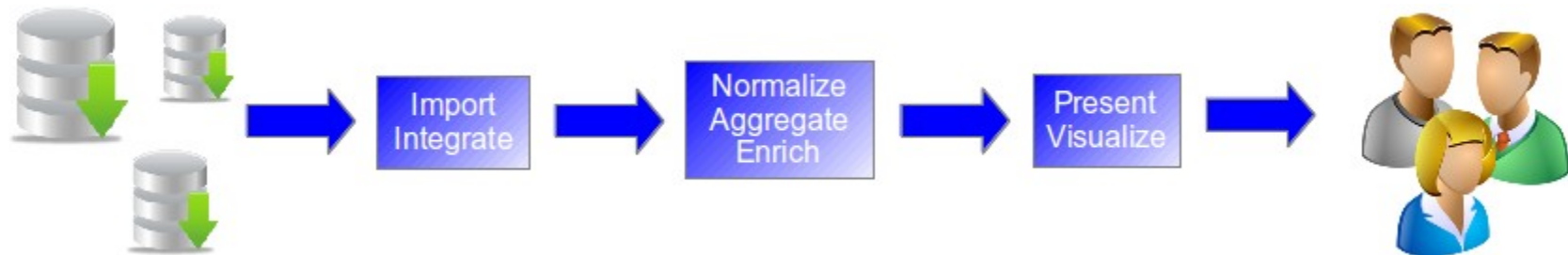


- Policy Makers
- Community, Interest Group
- Technical Difficulties
 - Publication
 - Exploration
 - Access
 - Presentation

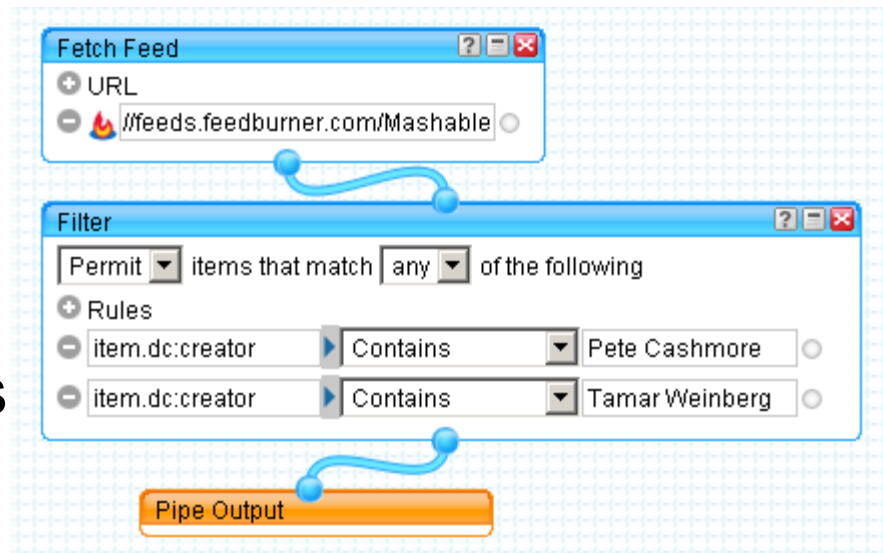




- Data from Multiple Sources
- Data Integration
- Multiple Formats, Ranges
- Normalization
- Meaningful Representation
- Application-driven



- OpenData Middleware
- Modular
- Extendable
- Yahoo Pipes, Dapper
Google Fusion Tables



- “Open” does not mean “Accessible”
- Need for an OpenData Middleware

Thank You

- Reach us and LISA under
<http://open.west.uni-koblenz.de>